

Apr. 26, 1889

014968

Providence R.I.  
This plat accompanies  
our report of this date

# PLAT OF CHARLES STREET

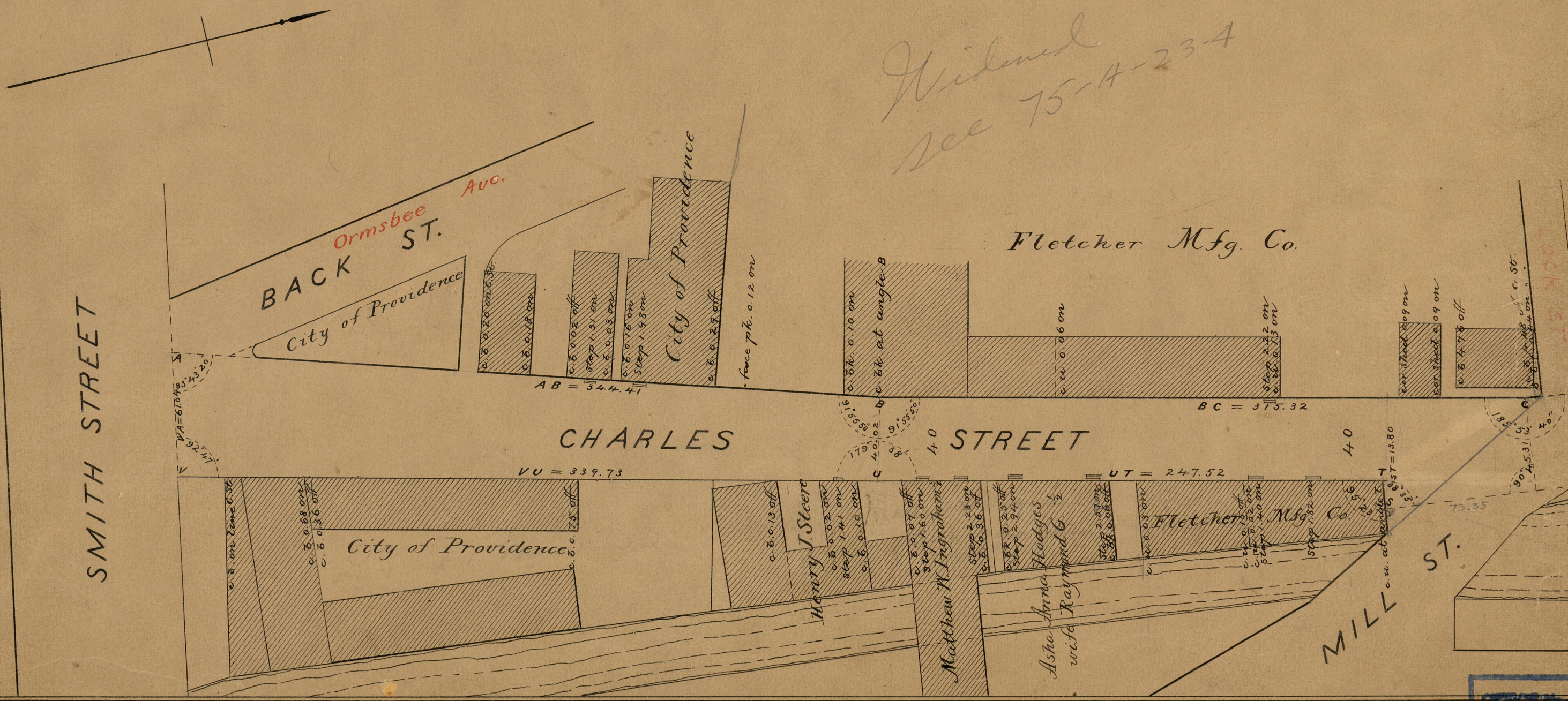
FROM SMITH ST. TO RANDALL ST.

IN THREE SHEETS

SCALE 50 FEET PER INCH

Rec'd. Oct. 16, 1890.

*Widened  
see 75-4-23-4*



83  
B-85

OFFICE NO.	10015
DRAWER	83
SHEET	B-85